



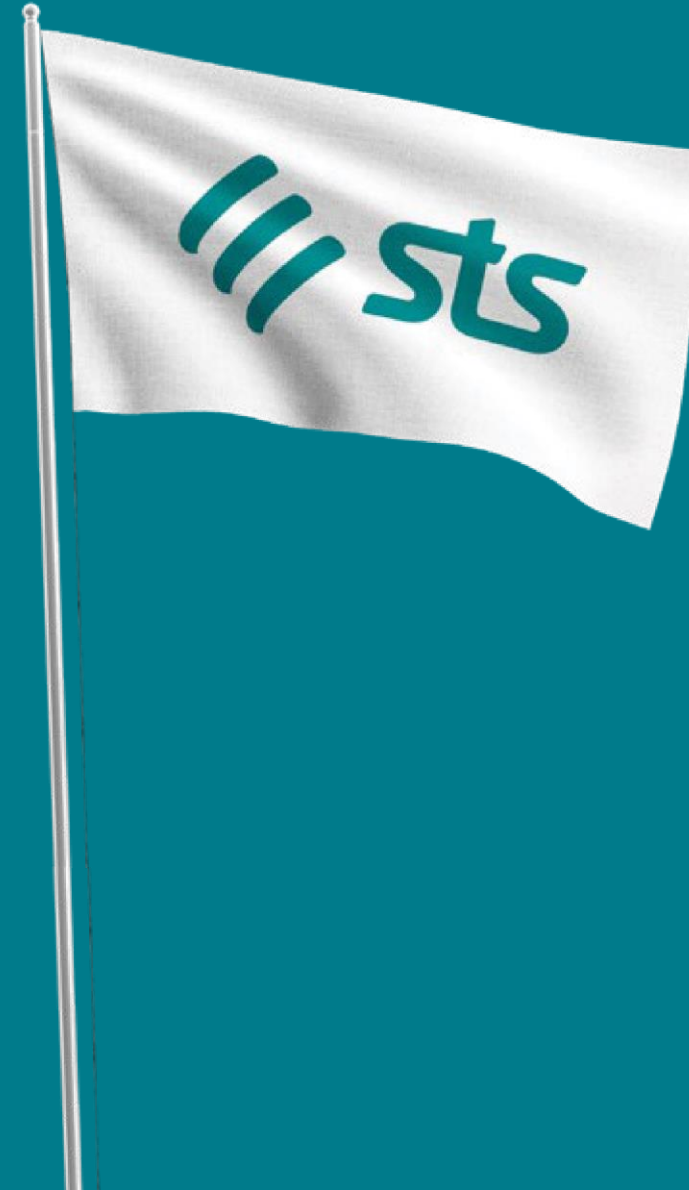
Specialized Technical Services

ESTABLISHED 1989

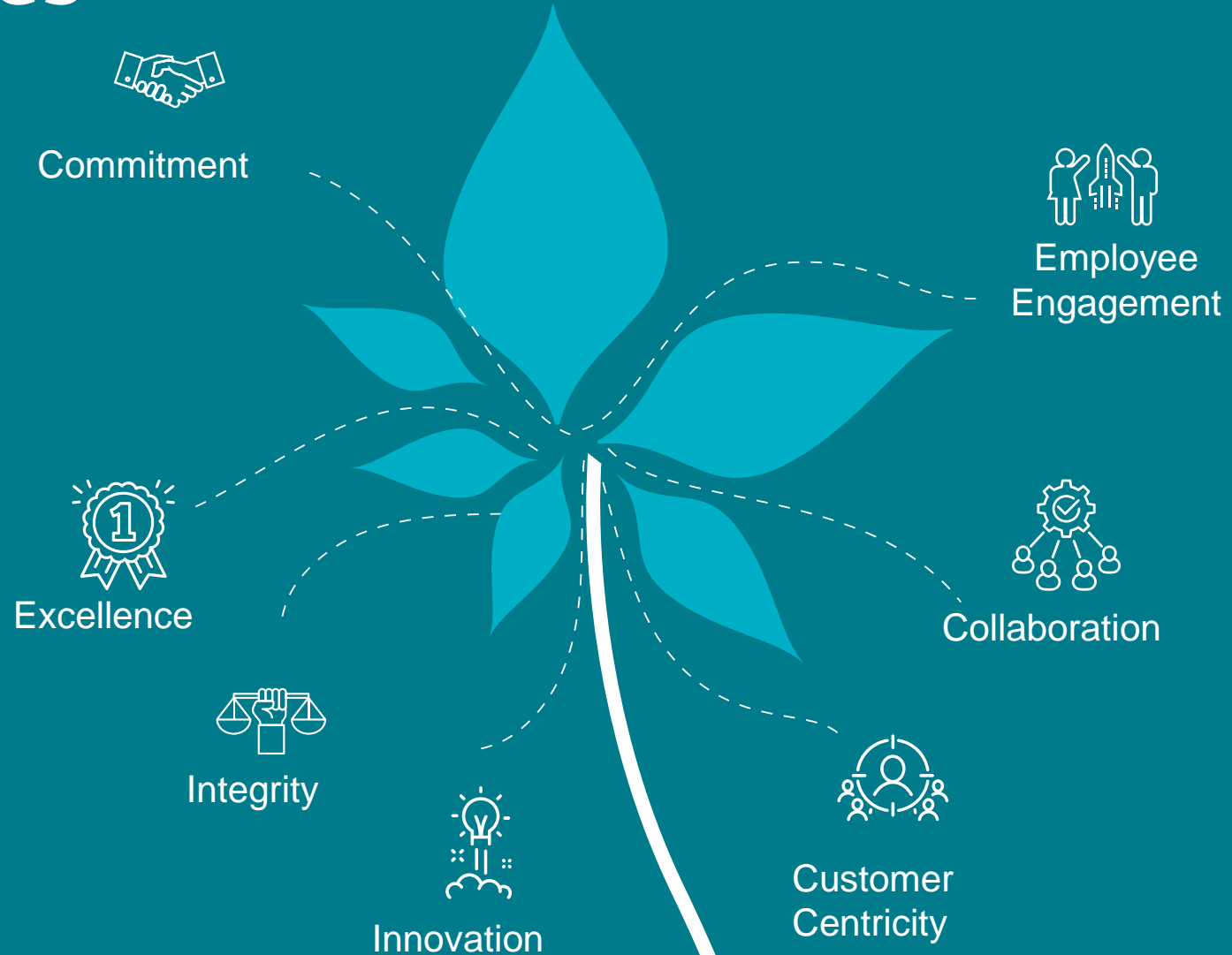
HQ Jordan
www.stsarabia.com

Our Mission

Our mission is to leverage our leadership position as a Technology Provider in MENA to deliver innovative Organizational Transformation Solutions, while maintaining our core principles of Excellence, Commitment and Integrity.



Our Principles



At a Glance



Partnerships on a Strategic Levels



Founded in 1989



Head Quartered In Amman, Jordan



2200+ Certificates



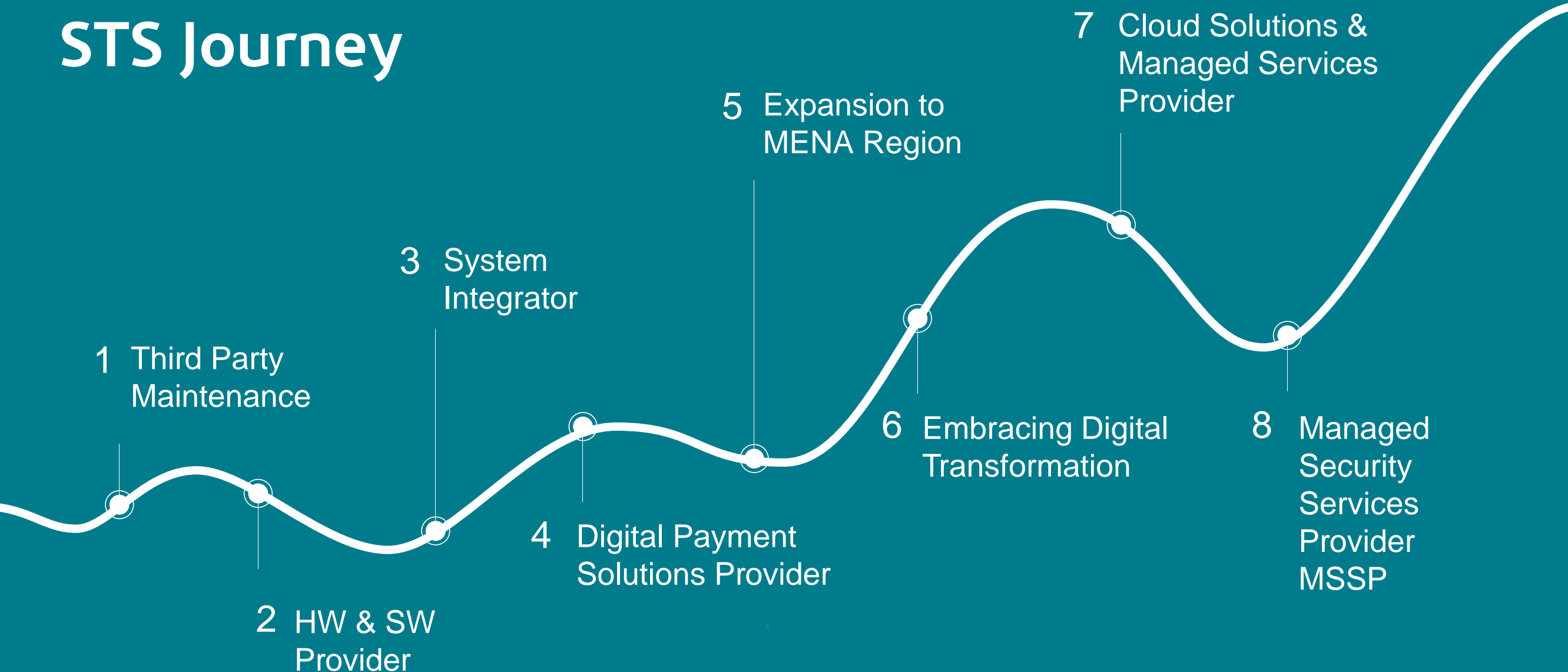
350+ Employees



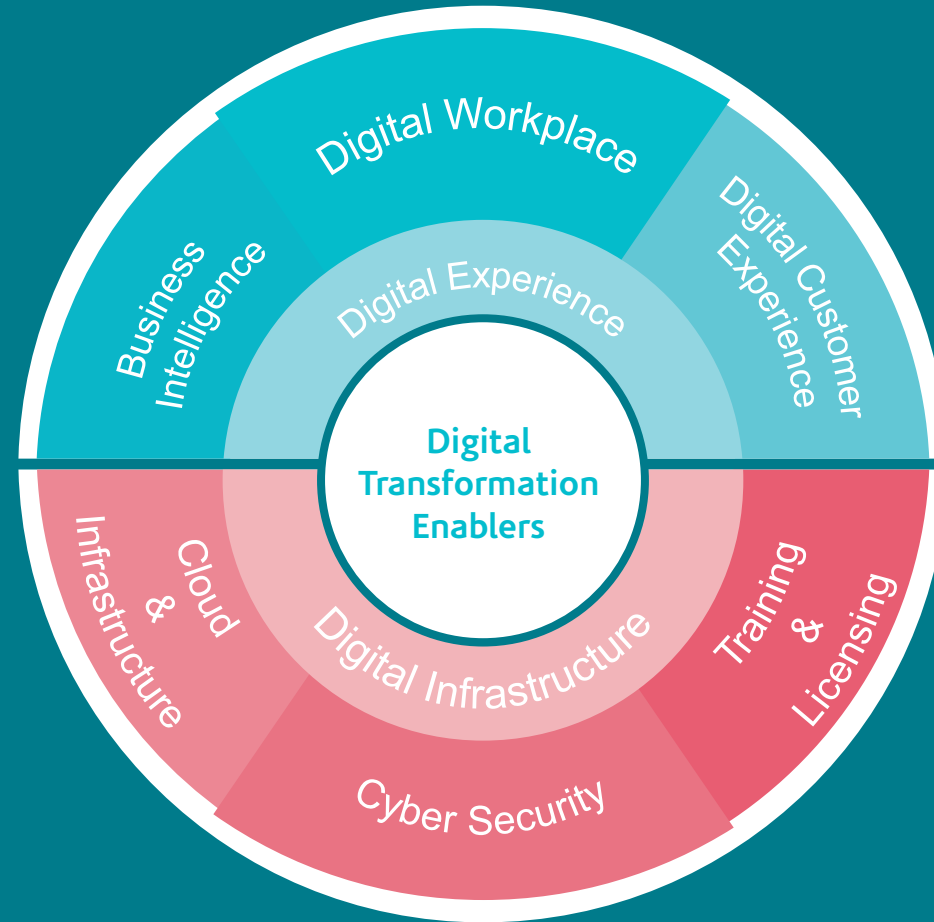
1500+ Big Projects



STS Journey



Top View



Modern Infrastructure

Cloud & Infrastructure

Cyber Security

Training & Licensing

Services

- Cloud & Infra Advisory Services
- Cloud & Infra Implementation Services
- Cloud & Infra Managed Services
- Network Assessment, preventive maintenance (Health Check)
- Network Deployment and Adoption Services
- Network Support Services

- Security Advisory & Assessment Services
- Managed Threat Detection & Response (MDR)
- Managed Security Testing & Advanced Analysis
- Managed Security Learning & Awareness
- Managed Cloud Security Services
- Security tools support, implementation and Management
- Privilege access workstations (PAW)

- Certification Courses
- Technical Courses
- Professional Courses
- Licenses' Renewal
- Licensing Advisory

Technologies

Digital Experience

Digital Workplace

Digital Customer Experience

Business Intelligence

Services

- Workplace Advisory
- Workplace Transformation
- Workplace Operations
- Audit Automation

- Sales Force Automation
- Customer Relationship Management

- Data Analytics
- AI
- RPA

Technologies



Cloud and Infrastructure

Modern Infrastructure

Services

**Cloud &
Infrastructure
Advisory
Services**

**Cloud &
Infrastructure
Implementation
Services**

**Cloud &
Infrastructure
Managed
Services**

**Network
Assessment,
Preventive
Maintenance
(Health Check)**

**Network
Deployment &
Adoption
Services**

**Network
Support
Services**



Cloud and Infrastructure

Modern Infrastructure

Solutions

Infrastructure
as a Service
(IaaS)

Infrastructure
Management
Solution

Backup as a
Service (BaaS)

Disaster
Recovery as a
Service (DRaaS)

Data Protection
Solutions

Data Storage
Solutions

Software
Defined
Network (SDN)

Hyper-
Converged
Solutions



Cloud and Infrastructure

Modern Infrastructure

Solutions

A white line-art icon on a teal background. It depicts a cloud with several vertical lines extending downwards, resembling circuit traces or data paths. Some lines end in small circles, and there are dashed lines at the bottom, suggesting connectivity or data flow.

Data Center
Monitoring &
Analytics

Virtualization
Solutions

Application
Delivery &
Traffic
Management

Wireless &
Networking

WAN
Connectivity &
Optimization

Data Center
Computing

End User
Computing

Structured
Cabling
Solutions



Cloud and Infrastructure

Modern Infrastructure



Solutions

**Software
Defined Access**

**Network
Automation,
Analytics, &
Management**



Cloud and Infrastructure

Modern Infrastructure

Technologies



sts Cloud



DELL EMC

ORACLE

vmware®



NETSCOUT™

FORTINET®

CORNING



VERITAS™



Cyber Security Solutions

Modern Infrastructure

Services

**Security
Advisory &
Assessment
Services**

**Managed
Threat
Detection &
Response
(MDR)**

**Managed
Security Testing
& Advanced
Analysis**

**Managed
Security
Learning &
Awareness**

**Managed Cloud
Security
Services**

**Security Tools
Support,
Implementation
& Management**

**Privilege Access
Workstations
(PAW)**





Cyber Security Solutions

Modern Infrastructure



Solutions

SEIM Solutions

SOAR Solutions

Endpoint
Detection &
Response

Email Security

Mobile Device
Management

Application
Security

Secure SDWAN

Web Security



Cyber Security Solutions

Modern Infrastructure



Solutions

**DDOS
Mitigation**

**Network
Security**

**Identity &
Access
Management**

**Privilege Access
Management**

**Identity,
Information &
Data Protection**

**Security Posture
Management**

**Threat
Intelligence**



Cyber Security Solutions

Modern Infrastructure

Technologies





Training & Licensing

Modern Infrastructure

Services

**Certification
Courses**

**Technical
Courses**

**Professional
Courses**

**Licenses'
Renewal**

**Licensing
Advisory**



Training & Licensing

Modern Infrastructure

Technologies





Digital Workplace

Digital Experience



Services

**Workplace
Advisory**

**Workplace
Transformation**

**Workplace
Operations**

**Audit
Automation**

Digital Workplace

Digital Experience

Technologies





Digital Customer Experience

Digital Experience

Services

**Sales Force
Automation**

**Customer
Relationship
Management**



Digital Customer Experience

Digital Experience



Technologies

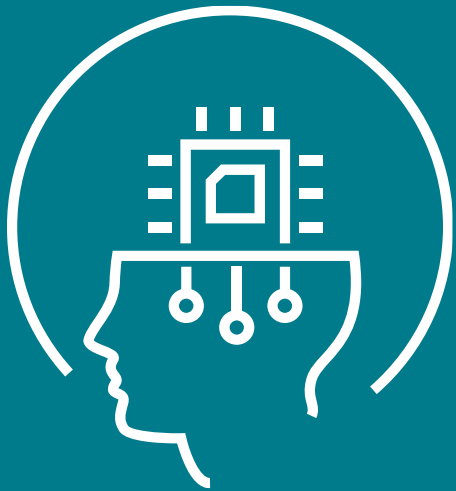
NSights

SEDCO



Business Intelligence

Digital Experience



Services

Data Analytics

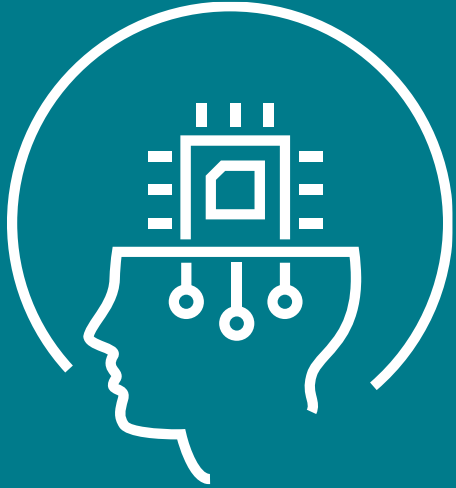
AI

RPA

Business Intelligence

Digital Experience

Technologies

The Cloudera logo, consisting of the word 'CLOUDERA' in a bold, orange, uppercase, sans-serif font.The Oracle logo, consisting of the word 'ORACLE' in a bold, red, uppercase, sans-serif font.The Microsoft logo, featuring the four-colored square icon (red, green, blue, yellow) to the left of the word 'Microsoft' in a grey, sans-serif font.



Thank you